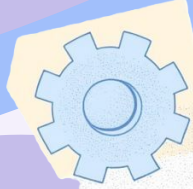




Eswatini-Payroll for Non-Residents

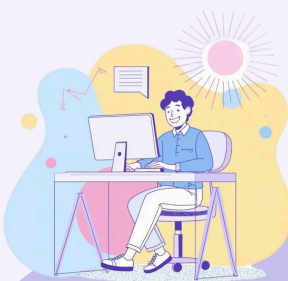
Payroll for non-resident employees in Eswatini via Deel Local Payroll powered by PaySpace.



Eswatini General

Navigation

Config | HR | Public Holidays



The **ENPF** is a mandatory retirement savings scheme requiring a combined 10% monthly contribution (5% each from employer and employee), from which non-citizens are excluded by law.



Currency: Eswatini Lilangeni (SZL) and South African Rand (ZAR).
Tax Year: 1 July – 30 June.
Tax Authority: Eswatini Revenue Service (ERS).
Verify public holidays each year — these factor into automatic leave payouts.
Residency affects tax.

Eswatini Payroll

Statutory fields specific to Eswatini:

- ENPF Employer Number.
- Employer Registration / TIN Number.
- Allow Negative PAYE in December and June.
- Taxation Method: Average Tax Method.
- PAYE is deducted by employers and paid to ERS by the 7th of the following month.

Navigation

Config | Basic Settings | Company Settings | Basic Company Information
 Config | Basic Settings | Company Settings | Basic Company Information | General tab for taxation method

Components

Navigation

Employee | Payroll Processing | Edit Payslip

Add Lump Sum Directives or Advised Bonuses here, too.



Eswatini-specific payroll components can be found in the:

- Allowance,
- Deduction,
- Company Contribution,
- Note, and
- Fringe Benefit components.



Three key legislative reports must be submitted:

- ENPF 200 Form (monthly ENPF contributions, due within 21 days).
- PAYE Reconciliation Report (submitted via TaxEase by the 7th of the following month).
- PAYE05 Employee Tax Certificate (annual certificate issued within 14 days of year-end or termination).

Reports

Navigation

Reports | Reports | NextGen | Legislative

User Support

Deel Local Payroll powered by PaySpace offers Multi-Channel Customer Service support.

Live Phone Support:

+27 87 210 3000
 08h00 - 17h00 Monday - Thursday
 08h00 - 16h00 Fridays
 (Excluding RSA public holidays and weekends)

South Africa Support Email:

support@payspace.com

Africa Support Email:

africa@payspace.com

Knowledge Base

[eSwatini Product User Guide](#)
[Eswatini PAYE Tax Guide](#)
[Eswatini | PAYE and TaxEase Alignment](#)



Ask Pacey for articles on 'Lump Sum Directives'